

# CERTIFICATE OF ANALYSIS

## ISO/IEC 17025:2017 ACCREDITATION #103104

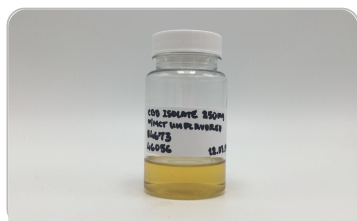


Order #: 43108  
 Order Name: CBD ISOLATE  
 250 MG NATURAL  
 Batch#: 46056  
 Received: 12/04/2019  
 Completed: 12/05/2019

Nutrition Formulators  
 10407 N Commerce Parkway  
 Miramar Florida, 33025  
 (954) 272-2220  
 christian@nnfi.net



### Sample



N/D  
 D9-THC

0.954%  
 Total CBD

286.1 mg  
 Cannabinoids per  
 unit

286.1 mg  
 CBD per  
 unit

1 unit = 30 ml per unit x density (1) x  
 Cannabinoid concentration

### Cannabinoids Test

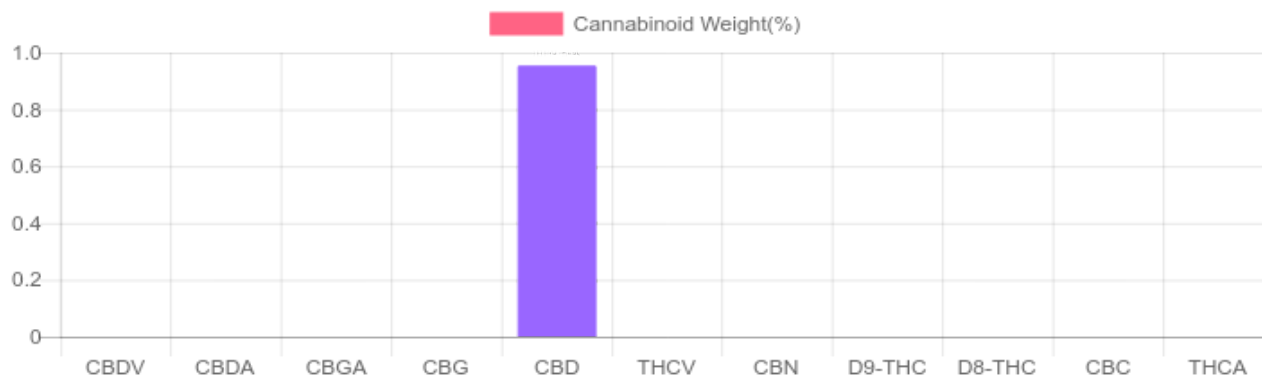
SHIMADZU INTEGRATED UPLC-PDA

GSL SOP 400

PREPARED: 12/04/2019 12:21:59

UPLOADED: 12/05/2019 08:01:50

Cannabinoids	LOQ	weight(%)	mg/g	mg/unit
D9-THC	10 PPM	N/D	N/D	N/D
THCA	10 PPM	N/D	N/D	N/D
CBD	10 PPM	0.954%	9.535	286.1
CBDA	20 PPM	N/D	N/D	N/D
CBDV	20 PPM	N/D	N/D	N/D
CBC	10 PPM	N/D	N/D	N/D
CBN	10 PPM	N/D	N/D	N/D
CBG	10 PPM	N/D	N/D	N/D
CBGA	20 PPM	N/D	N/D	N/D
D8-THC	10 PPM	N/D	N/D	N/D
THCV	10 PPM	N/D	N/D	N/D
TOTAL D9-THC		N/D	N/D	N/D
TOTAL CBD*		0.954%	9.535	286.1
TOTAL CANNABINOIDS		0.954%	9.535	286.1



Reporting Limit 10 ppm

\*Total CBD = CBD + CBDA x 0.877

N/D - Not Detected, B/LOQ - Below Limit of Quantification



4001 SW 47th Avenue Suite 208  
 Davie, FL 33314  
 1-833-TEST-CBD  
 info@greenscientificlabs.com



Accreditation #103104



Dr. Andrew Hall, Ph.D., CSO & Lab Director

Green Scientific Labs uses its best efforts to deliver high quality results and to verify that the data contained therein are based on sound scientific judgment and levels listed are guidelines only and all data was reported based on standard laboratory procedures and deviations. However Green Scientific Labs makes no warranties or claims to that effect and further shall not be liable for any damage or misrepresentation that may result from the use or misuse of the data contained herein in any way. Further, Green Scientific Labs makes no claims regarding representations of the analyzed sample to the larger batch from which it was taken. Data and information in this report are intended solely for the individual(s) for whom samples were submitted and as part of our strict confidentiality policy, Green Scientific Labs can only discuss results with the original client of record.

